



Picotig 200 AC/DC 5P TG



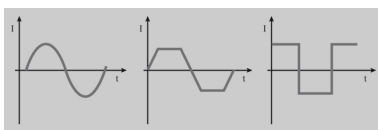
- Inverter welding machine, AC/DC, gas-cooled
- TIG and MMA welding
- Practical reduction of the operating elements down to the most important functions
- Portable, shoulder strap
- Connection capability for remote control and function torch
- 3 m mains supply lead with 16 A shock-proof plug
- Overvoltage protection: No damage to machine caused if inadvertently connected to 400-V mains voltage

	TIG		MMA	
Setting range for welding current	5 A - 200 A		-	
Duty cycle at ambient t.e	25 °C	40 °C	25 °C	40 °C
35 %	-	200 A	-	-
50 %	-	-	-	140 A
60 %	-	150 A	-	130 A
100 %	-	120 A	-	110 A
Mains frequency	50 Hz / 60 Hz			
Mains fuses (slow-blow)	1 x 16 A			
Mains voltage (tolerances)	1 x 230 V (-40 % - +15 %)			
Max. connected load	5.6 kVA		-	
Recommended generator power	8.1 kVA		-	
Dimensions, machine, LxWxH in mm	600 x 205 x 415			
Weight, machine	16.5 kg			
Protection classification	IP 23			
Torch connection	Decentral			
Standards	IEC 60 974-1; -3; -10 / CE / S-Safety sign / EMC class A			



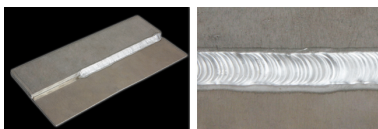
Easy to use on site

The Retox torch allows all programs, operating modes and the up/down function to be called up at the touch of a button.



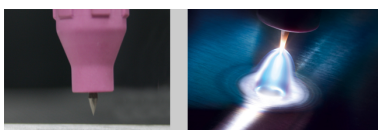
Alternating current types for every need

Different types of alternating current allow welding properties to be individually selected: sinusoid – for agreeably low-noise welding; trapezoid – the all-round setting for almost every application; rectangular – for particularly difficult applications



AC special for thin to thick

Simple and reliable: 1 mm to 10 mm! Reliable joining of aluminium panels with very different thicknesses: good penetration in the thicker panel, no melting through the thin panel.



Reliable ignition

AC: Reliable ignition, stable arc because the shape of the balled end can be very easily adjusted in line with the tungsten electrode diameter. This reduces electrode wear